

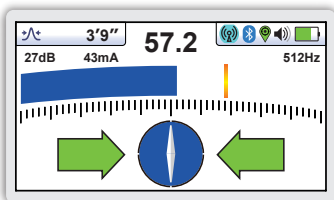


# vLoc3-Pro UTILITY LOCATOR

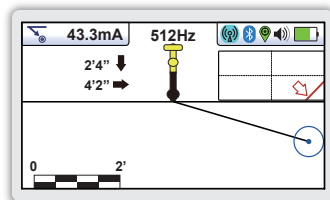
- Color-coded EM distortion warnings
- Offset locate modes - Vector and Plan View
- Cloud-based data warehousing
- Internal data logging
- Optional Bluetooth connectivity

**The vLoc3-Pro utility locator** introduces new innovative tools for locating buried utilities assuring damage prevention while gathering information for analysis. With two sets of screened 3D antennas signal distortion is easily detected and displayed on the bright full-color display. Along with classic locate screens the vLoc3 series locators offer new locate perspective screens of Vector Locate for fully automatic non-walk over locating, Transverse Graph showing both peak and null simultaneously providing an immediate measurement of signal distortion, Plan View showing the relative orientation of the cable at any angle, and a new graphical Sonde screen with guidance arrows leading to the sonde location even when it is vertical.

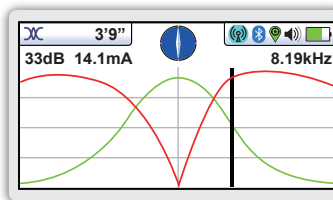
The highly user-configurable vLoc3 series contains eight passive locate modes, fault-find mode, SD (showing the direction of outgoing current), and a range of configurable frequencies from 98Hz to 200 kHz. Visual and mechanical vibration alerts can also be configured by the user providing warnings for shallow depth, overload, overhead cables, and excessive swinging. Plug-in-play options for the receiver include an optional Bluetooth module usable with external GPS devices and MLA (marker locator adapter) to locate buried markers.



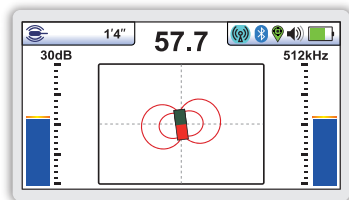
**Classic Screen** - as in previous vLoc locators, with the addition of three color-coded distortion levels



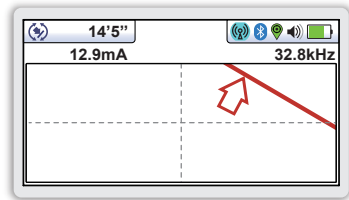
**Vector Locate** - shows orientation, line position, and distance relative to the locator in 3D



**Transverse Plot Screen** - is used to display the peak and null to compare distortion shape



**Sonde Screen** - arrow guidance showing direction to the sonde and depth of cover



**Plan View Screen** - displays the theoretical line in 2D from above ground in omnidirectional mode

- Alkaline and Li-ion Batteries**
- Alkaline = typically 12-hours intermittent use
  - Li-ion = typically 27-hours intermittent use

- USB Data Port**
- Update the receivers firmware
  - Download datalogs

- Accessory Port**
- Remote Stethoscope Antenna
  - A-Frame Fault locator
  - Vehicle charging lead
  - Charge Li-ion battery

- Antenna Configuration**
- Two sets of Omnidirectional Antennas, each comprising:
- Two Compass Antennas
  - Two Horizontal antennas
  - Two Vertical antennas

- Optional plug-in MLA marker locator**

- Ultra Bright LCD**
- High visibility 4.3"/10cm LCD
  - Auto backlight

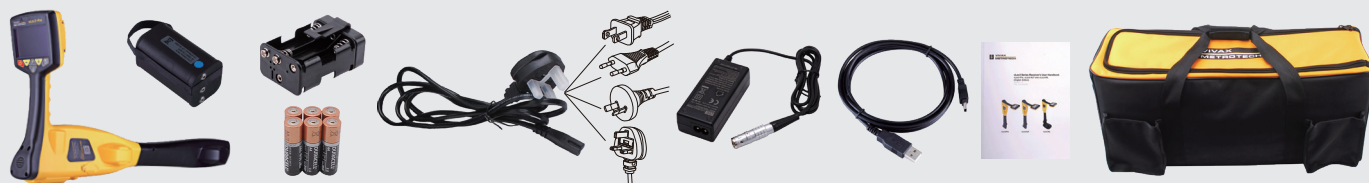
- Module Compartment**
- Optional plug-and-play Bluetooth module

- Data Logging**
- 50 Million record internal storage
  - GPS coordinates (if Bluetooth active)
  - Download data with MyLocator app
  - Access data VMMMap Cloud app

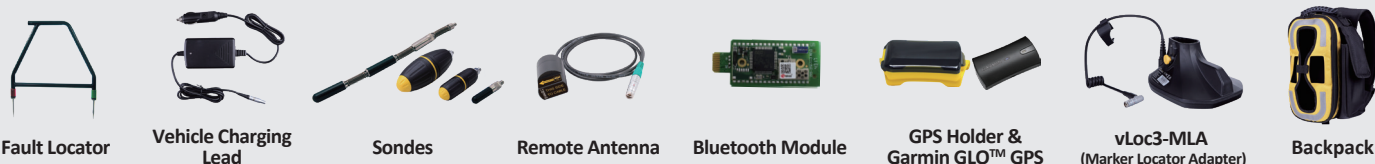
- Construction**
- High impact ABS plastic construction
  - IP65 and NEMA 4 rating
  - Lightweight at only 4.6lbs / 2.1kg

vLoc3-Pro Receiver Specifications	
<b>Construction</b>	High impact ABS injection molded housing
<b>Weight &amp; Dimensions</b>	4.6lbs (2.1kg) / 12.6in(L) x 4.9in(W) x 26.6in(H) (321mm x 124mm x 676mm)
<b>Display</b>	Transmissive 480 x 272 Pixel, 16-bit Color, High Visibility 4.3"/10cm LCD
<b>Battery options</b>	Rechargeable custom Lithium-ion batteries with 100-240V AC mains charger Six x AA Alkaline batteries
<b>Battery life</b>	Lithium-ion – typically 27-hours intermittent use at 70°F (21°C) Alkaline – typically 12 hours intermittent use at 70°F (21°C)
<b>Operating frequencies</b>	Configurable frequencies from 98Hz to 200 kHz Power - 50Hz and 60Hz Radio - 10kHz - 22.7kHz bandwidth
<b>Operating modes</b>	Classic Locate (Bar graph), Transverse Graph Mode, Plan View (Omni Directional) Vector Locate (Lateral Position & Depth), Sonde Locate
<b>Data logging and transfer</b>	50 Million records - Records include depth, current, frequency, mode, gain setting, signal strength, GPS coordinate, date and time (if Bluetooth active) Download data from the receiver using the free MyLocator3 desktop app, save as xlx, txt, shp and kml files
<b>Environmental</b>	IP65 and NEMA 4

## What's in the box



## Popular Accessories (See our Accessories Brochure for a full list of receiver and transmitter accessories)



## Compatible Transmitters

### 1- Watt Transmitters



VM-550FF/VM-560FF

### 5-Watt Transmitter



Loc3-5Tx

### 10-Watt Transmitter



Loc3-10Tx

### 25-Watt Transmitter



Loc3-25Tx

Local Vivax-Metrotech Distributor:

### Vivax-Metrotech Corporation

3251 Olcott Street, Santa Clara, CA 95054, USA

**T/Free: 1-800-446-3392**

**Tel: +1-408-734-1400**

www.vivax-metrotech.com

Tag us on social media @vivax\_metrotech



V1.8

Please visit our website for full product specifications.