

# HYDROEXCAVATION STRAIGHT JET NOZZLES

# VECTOR® **REVEAL™**

Introducing the new Vector Reveal™, a high-performance, configurable straight jet hydroexcavation nozzle, designed to **improve your productivity** while digging with water. Less water is needed with the Reveal nozzle making digging easier and causing less fatigue.



## **Durable design. Corrosion resistance. Superior quality.**

- Straight jet nozzle body constructed of stainless steel
- High visibility orange replaceable guard made from UHMW for wear resistance and to more easily see the nozzle tip

## **Customization: Flow rates/Jet configurations**

- Reveal uses inserts to change the water flow rates through the nozzle
- Using (included) plugs, nozzle configuration can be changed from triple, to double, to a single jet



## **Efficient, high impingement streams to break up soil**

- Straight jet water stream maximizes material shear stress to agitate and break up soils for easy conveyance
- Flow and spray patterns are optimized, achieving easy digging
- Engineered for high impingement



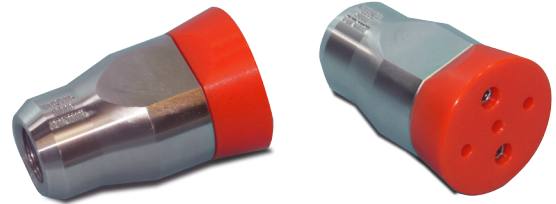
Feel the **difference**. Try the **Reveal**.

Visit [vector.com](http://vector.com) to learn more.

# HYDROEXCAVATION STRAIGHT JET NOZZLES

# VACTOR® **REVEAL™**

## VACTOR® **REVEAL™**



Vector P/N	Nozzle Size	# of Jets	GPM @ 1000PSI	GPM @ 1500PSI	GPM @ 2000PSI	GPM @ 2500PSI	GPM @ 3000PSI
510011A	1/4	1	2.58	3.16	3.65	4.08	4.47
510011B	1/6	1	3.83	4.69	5.42	6.06	6.64
510011C	1/8	1	5.19	6.36	7.35	8.21	9.00
510011D	1/10	1	5.60	6.86	7.92	8.86	9.70
510011E	1/12	1	7.38	9.04	10.44	11.68	12.79

Vector P/N	Nozzle Size	# of Jets	1000	1500	2000	2500	3000
510012A	2/4	2	2.47	3.02	3.49	3.90	4.27
510012B	2/6	2	3.61	4.43	5.11	5.71	6.26
510012C	2/8	2	5.17	6.33	7.31	8.17	8.95
510012D	2/10	2	6.78	8.30	9.58	10.72	11.74
510012E	2/12	2	7.67	9.39	10.84	12.12	13.28
510012F	2/16	2	10.38	12.72	14.70	16.42	18.00

Vector P/N	Nozzle Size	# of Jets	1000	1500	2000	2500	3000
510013A	3/4	3	2.15	2.64	3.05	3.41	3.73
510013B	3/6	3	3.70	4.53	5.23	5.85	6.41
510013C	3/8	3	4.52	5.53	6.39	7.14	7.83
510013D	3/10	3	5.42	6.64	7.67	8.57	9.39
510013E	3/12	3	7.75	9.49	10.96	12.25	13.42
510013F	3/16	3	10.17	12.45	14.38	16.07	17.61