



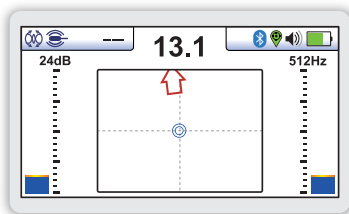
# vLoc3-Cam SONDE LOCATOR

- 360° Guidance arrows
- Sonde locate and pushrod trace modes
- High visibility color 4.3"/10cm Display
- Locate utilities with optional transmitter
- Optional Bluetooth connectivity

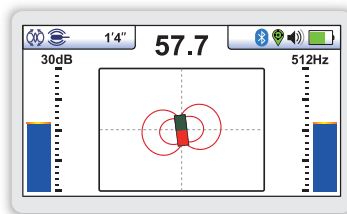
The easiest, quickest and most accurate way to locate the position of a sonde is found in the vLoc3-Cam Sonde Locator. The bright full-color intuitive graphical display guides the user to the sonde using directional arrows. When directly on top of the sonde a large sonde icon appears confirming the sonde location and it's depth reading is confirmed.

The vLoc3-Cam includes multiple sonde frequencies making it compatible with the major push cameras and crawler cameras on the market. The Pushrod Trace mode shows a second display geared for tracing the path of the pushrod deployed in the pipe or tracing pipes with an optional portable transmitter.

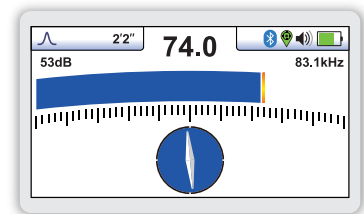
The vLoc3-Cam comes with two Passive locate modes of Power and Radio which will detect the presence of live power lines, CATV, telephone and some metallic pipes which radiate 50Hz from nearby or overhead power lines. For active locating, with the use of a portable transmitter, the vLoc3-Cam comes with a choice of 33kHz or 83kHz frequency for tracing the pushrod. These frequencies are also ideal for water and gas utilities which generally are larger pipes with bell housings and gaskets, as well as locating small diameter drop wires and inducing signals through the soil, onto services when direct connecting is not an option.



**Locate points** - Shows null in front or behind the sonde with arrow directing to the sonde location



**Sonde location** - When directly over the sonde the sonde icon appears and depth is shown in upper left



**Pushrod trace mode** - Shows a peak response when locating. Compass indicator turns blue when in line with the pushrod.

#### Alkaline and Li-ion Batteries

- Alkaline = typically 12-hours intermittent use
- Li-ion = typically 27-hours intermittent use

#### USB Data Port

- Update the receivers firmware

#### Accessory Port

- Vehicle charging lead
- Charge li-ion battery

#### Antenna Configuration

- Two sets of 3D antennas
- Omnidirectional antenna array



#### Ultra Bright LCD

- High visibility 4.3"/10cm LCD
- Auto backlight

#### Module Compartment

- Optional plug-and-play Bluetooth module

#### Construction

- High impact ABS plastic construction
- IP65 and NEMA 4 rating
- Lightweight at only 4.6lbs / 2.1kg

vLoc3-Cam Receiver Specifications	
<b>Construction</b>	High impact ABS injection molded housing
<b>Weight &amp; Dimensions</b>	2.1kg / 321mm (L) x 124mm (W) x 676mm (H)
<b>Display</b>	Transmissive 480 x 272 Pixel, 16-bit Color, 10cm High Visibility LCD
<b>Battery options</b>	Six x AA Alkaline batteries Optional custom Lithium-ion rechargeable battery
<b>Battery life</b>	Lithium-ion - typically 27-hours intermittent use at 70°F (21°C) Alkaline - typically 12 hours intermittent use at 70°F (21°C)
<b>Operating frequencies</b>	Sonde mode - 512Hz, 640Hz, 8,192kHz, 33kHz, and 83kHz Pushrod trace/line trace - choice of 33kHz or 83kHz Power - 50Hz Radio - 10kHz - 22.7kHz bandwidth
<b>Operating modes</b>	Sonde mode Pushrod/line trace mode
<b>Environmental</b>	IP65 and NEMA 4

## What's in the box



## Popular Accessories



Vehicle Charging Lead



Li-ion Rechargeable Battery



Sondes



GPS Holder & Garmin GLO™ GPS

## Compatible Transmitters

### 1- Watt Transmitters



VM-550FF



Loc-1Tx

### 5-Watt Transmitter



Loc3-5Tx

### 10-Watt Transmitter



Loc3-10Tx

### Vivax-Metrotech Corp. (Headquarters)

3251 Olcott Street, Santa Clara, CA 95054, USA  
T/Free: 800-446-3392  
Tel: +1-408-734-1400  
Fax: +1-408-734-1415  
Email: SalesUSA@vxmt.com

### Vivax-Metrotech Ltd.

Unit 1, B/C Polden Business Centre,  
Bristol Road, Bridgwater,  
Somerset, TA6 4AW, UK  
Tel: +44(0)1793 822679  
Email: salesUK@vxmt.com

### Ventas para América Latina

3251 Olcott Street, Santa Clara, CA 95054, USA  
T/Free: 800-624-6210  
Tel: +1-408-734-1400  
Fax: +1-408-743-5597  
Email: LatinSales@vxmt.com

### Vivax Canada Inc.

41 Courtland Ave Unit 8, Vaughan,  
ON L4K 3T3, Canada  
Tel: +1-289-846-3010  
Fax: +1-905-752-0214  
Email: SalesCA@vxmt.com

### Vivax-Metrotech SAS

Technoparc - 1 allée du Moulin Berger,  
69130 Ecully, France  
Tel: +33 (0)472 53 03 03  
Fax: +33 (0)472 53 03 13  
Email: SalesFR@vxmt.com

### Metrotech Vertriebs GmbH

Am steinernen Kreuz 10a  
D-96110 Schesslitz  
Tel: +49 954 277 227 43  
Email: SalesEU@vxmt.com



Disclaimer: All product availability or product accessory information is subject to change without notice.

V1.2 (Apr 2020)